



PARTNER BREAKFAST

ACM 2019

WELCOME!

Rae Ostman

Director

NISE Network

Co-Director, Center for Innovation in Informal STEM Learning

Arizona State University





Contents

Overview

Project highlights

Opportunities

What's next

NISE NETWORK

The National Informal STEM Education Network

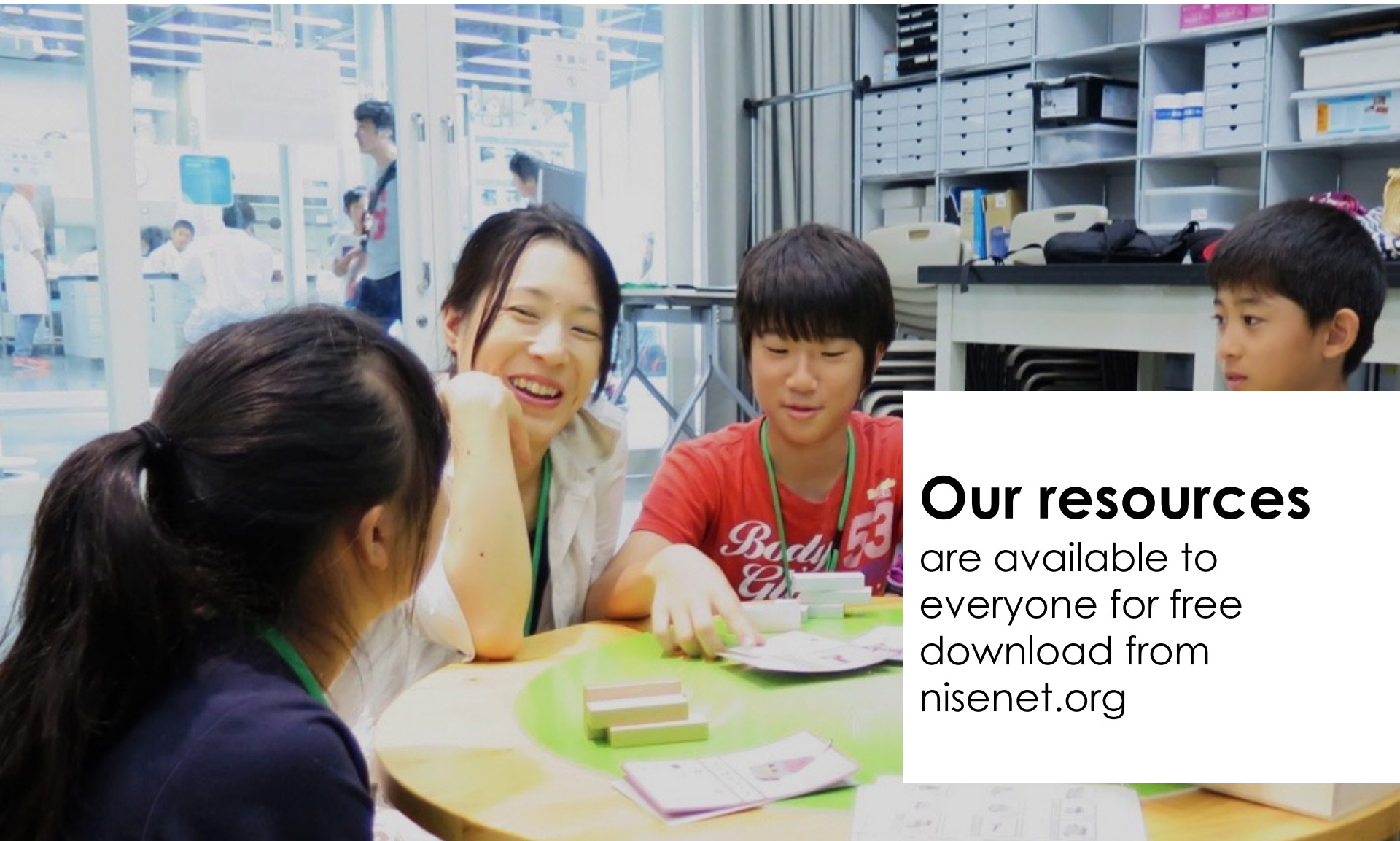
is dedicated to supporting learning about science, technology, engineering, and math (STEM).

Our activities

are fun and accessible
for everyone.



We create and share **products and practices materials** with partners around the world.



Our resources

are available to
everyone for free
download from
nisenet.org

Hundreds of organizations participate in the NISE Network, including museums and universities.



Our community

includes educators,
researcher/evaluators,
and scientists
at museums
and universities.

Partner organizations use Network resources to engage audiences in their communities.

A photograph of two young women, one Black and one Asian, sitting at a table and working on a science project. They are both wearing blue lab coats over their casual clothing. The Black woman is on the left, wearing a white cardigan over a red top, and is looking towards the camera with a slight smile. The Asian woman is on the right, wearing a green sweater, and is looking directly at the camera. They are both wearing white gloves. On the table in front of them is a green tray with a small experiment setup involving a metal rod, a coil of wire, and red and black wires. There is also a blue bowl and some papers on the table. The background is a solid blue wall.

Local implementation

brings people together to share and learn from each other.

NISE Net projects tackle challenging problems and develop relevant knowledge, tools, and practices.

NISE Network

relationships,
knowledge, and
infrastructure support a
variety of projects.



Together we reach **millions of people** each year!

Our impact

grows each year
through the efforts of
our partner
organizations.



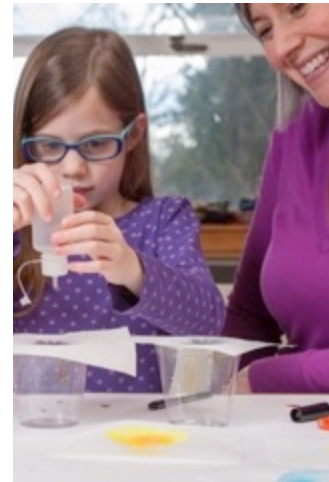
PROJECT HIGHLIGHTS

Current projects explore many STEM topics!

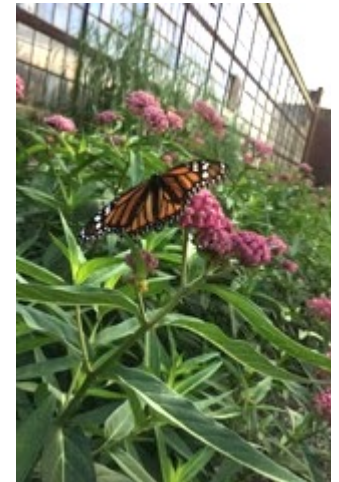
Synthetic biology
2014-2018



Chemistry
2016-2019



Sustainability
2018-2020



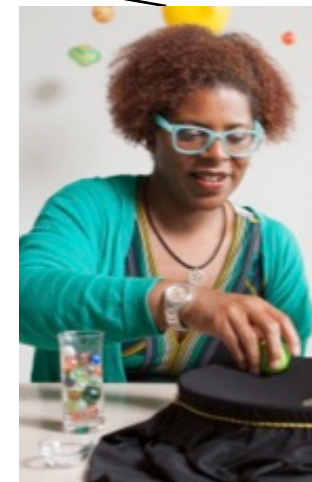
2005 ● ● ● ● ● ● ● ● ● ● ● ● ● ● ● ● 2020



Nanotechnology
2005-2017



Innovation
2015-2019



Earth and space
2016-2021

Nanoscale Informal Science Education Network

A close-up photograph of a man with glasses and a young girl with dark curly hair, both smiling and looking at a science experiment. The man is wearing an orange shirt and is leaning over the girl. The girl is also wearing an orange shirt. They are looking at a wooden frame with several vertical rods, possibly a model of a molecular structure or a simple machine. The background is slightly blurred, showing some green and white elements.

Building a national network

to engage audiences
in learning about
current STEM research

Nanoscale Informal Science Education Network

60,000,000

people reached to date
through the Nano project



Building with Biology



Creating dialogue

among researchers, educators, and public audiences about STEM and society

Building with Biology

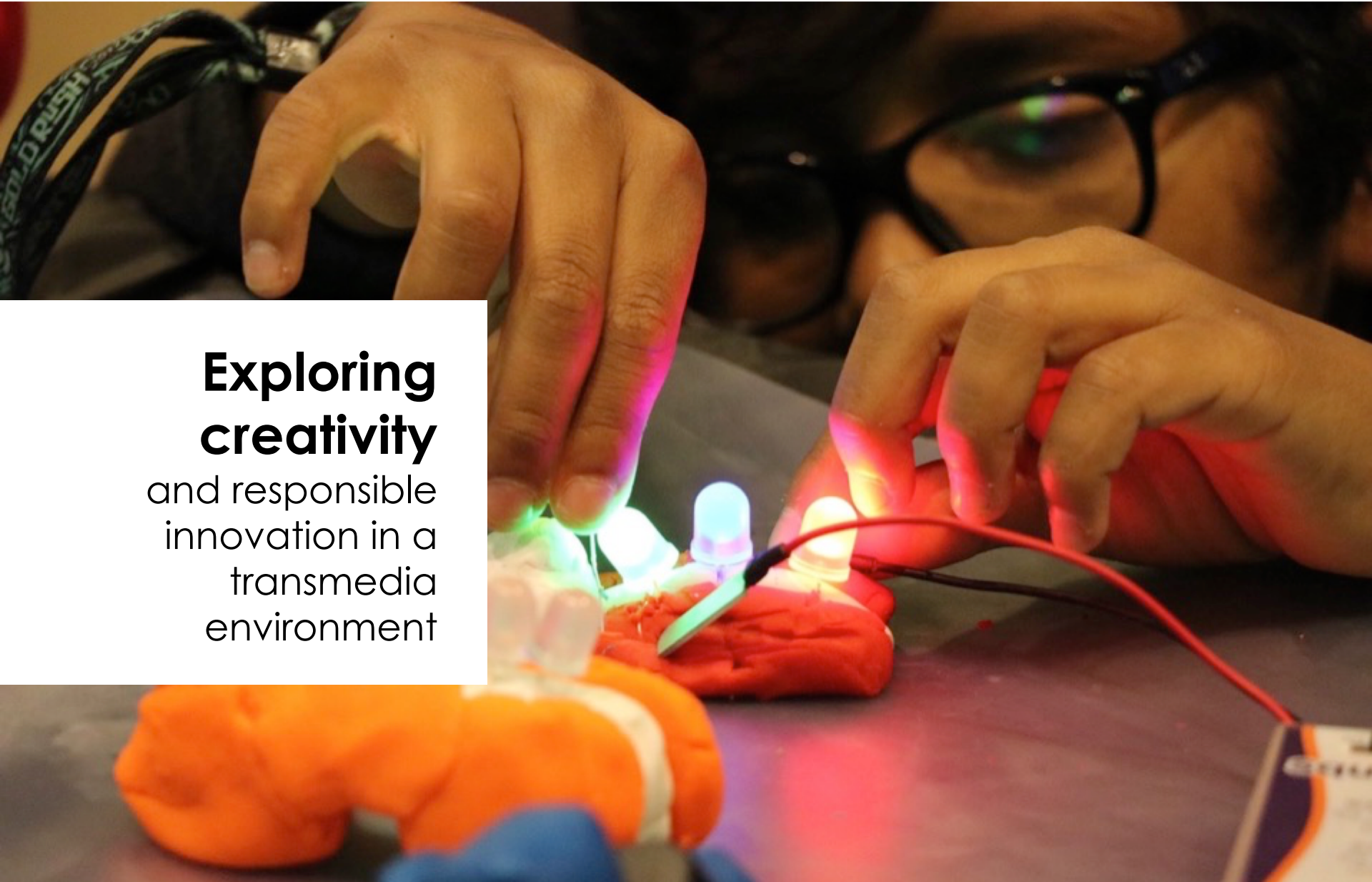
90% +

of participants at public events did an activity, talked to a scientist, and asked a volunteer a question



Frankenstein200

**Exploring
creativity**
and responsible
innovation in a
transmedia
environment



Frankenstein200



90% +
of family visitors
describe the hands-on
activities as “fun” and
“imaginative”

Space & Earth Informal STEM Education



**Connecting
learners**
to authentic
Earth and space
science and experts

Space & Earth Informal STEM Education



3,400,000

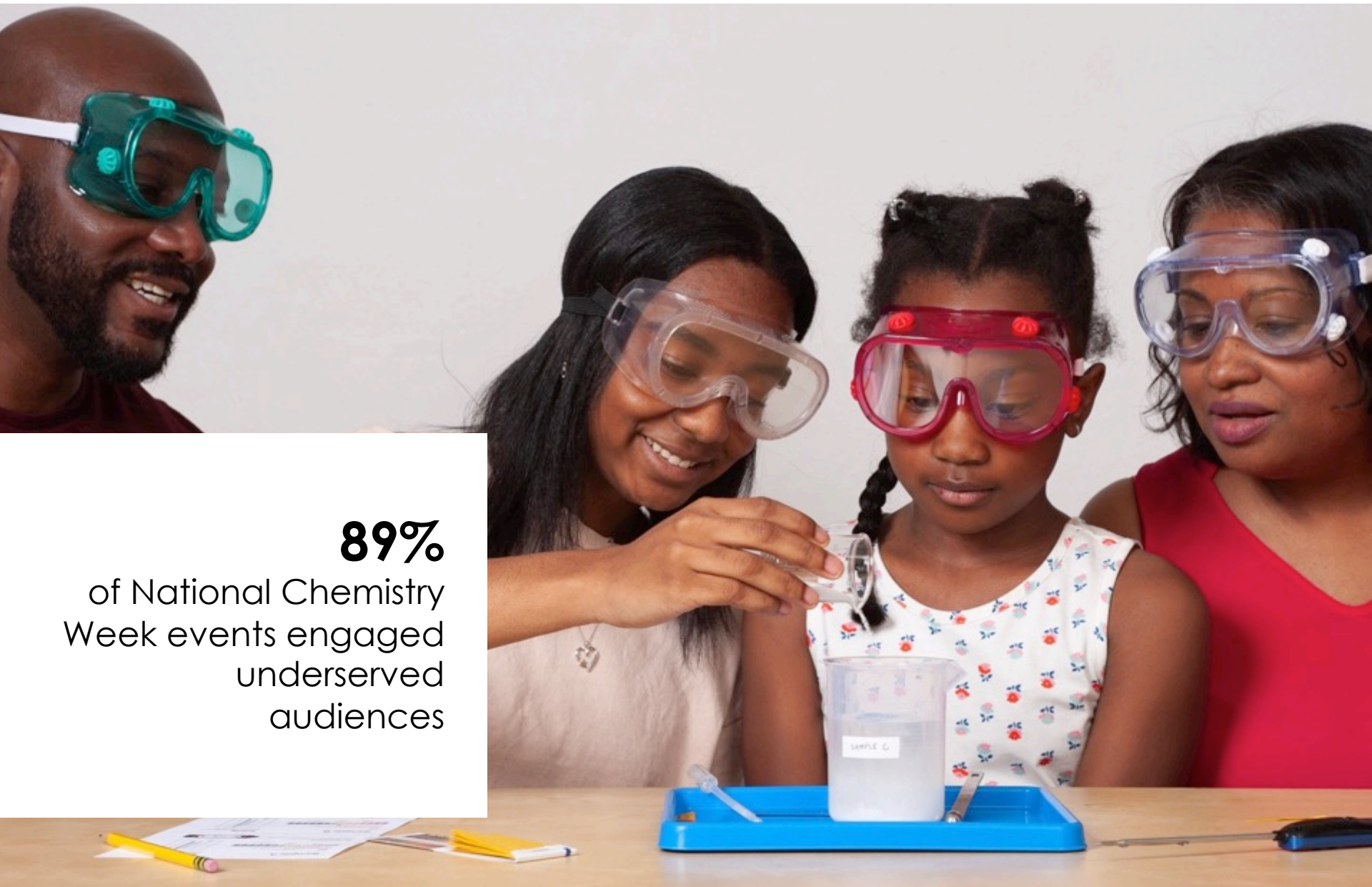
people reached
through the
Earth & Space project

Explore Science: Let's Do Chemistry



**Promoting
positive
attitudes**
toward learning
chemistry

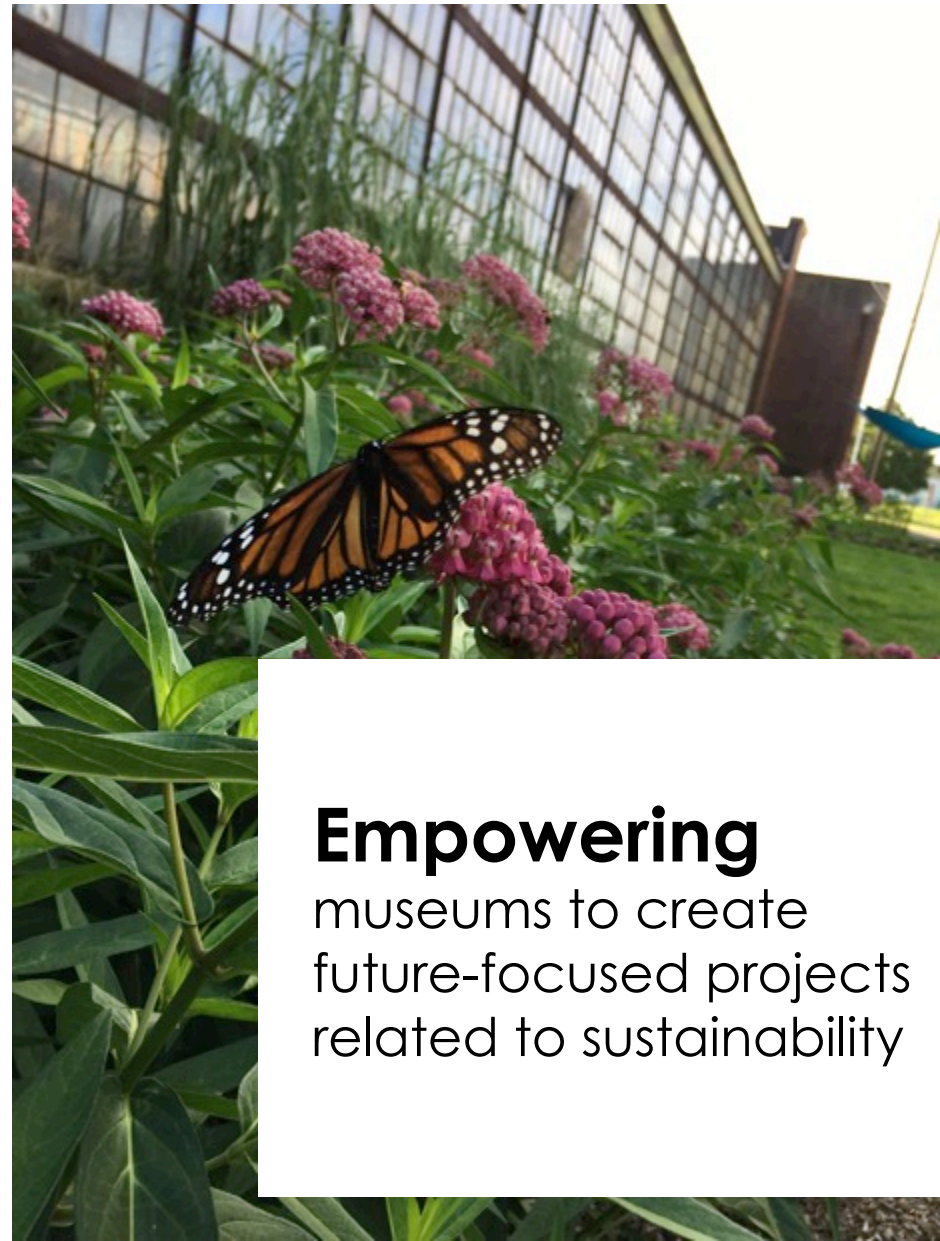
Explore Science: Let's Do Chemistry



89%

of National Chemistry
Week events engaged
underserved
audiences

NEW! Sustainable Futures



Empowering
museums to create
future-focused projects
related to sustainability

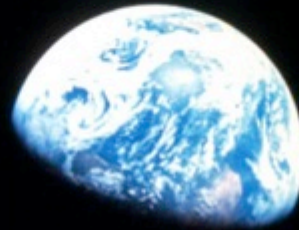
OPPORTUNITIES

Summer, 2019

50th anniversary of Apollo 11 moon landing

More information on Sustainable Futures

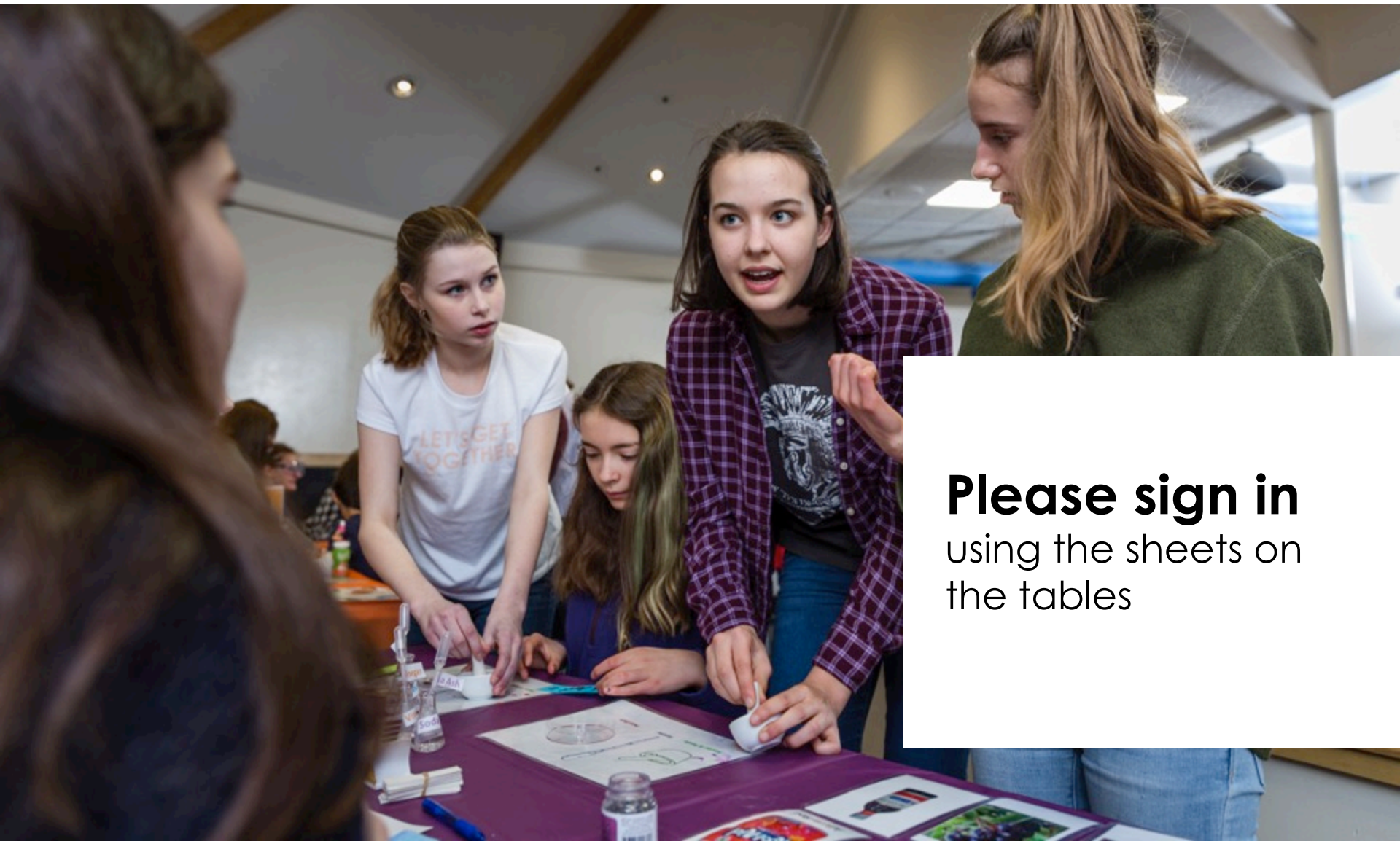
**Events and
resources**
nisenet.org



Fall, 2019

Oct. 20-26: National Chemistry Week

Nov. 1: Earth & Space 2020 toolkit application



Please sign in
using the sheets on
the tables

Regional hub leaders are your connection to all Network activities!

Get in touch!
Hub leaders:
nisenet.org/contact



nisenet.org has a digital library of our resources available for free download!

nisenet.org

Monthly newsletter
nisenet.org/newsletter

Social networking:
nisenet.org/social



WHAT'S NEXT

Earth and space science

(Years 6-10)

Planning

Paul Martin
Rae Ostman



Brain science and technologies and their societal implications



Planning

Jayatri Das
Darrell Porcello

Human origins

Biological, cultural, and environmental change

Planning

Paul Martin
Rae Ostman



Let us know!



Sustainability
Earth and space
Brain
Human origins

How do these topics connect to your museum?
What do you need and want? What do you have to share?
Do you have other ideas for new projects we can work on together?

THANK YOU

Online digital library:
nisenet.org

Monthly newsletter
nisenet.org/newsletter

Social networking:
nisenet.org/social



Leadership

Arizona State University

Children's Creativity Museum

Children's Museum of Houston

Museum of Life and Science

Museum of Science

Oregon Museum of Science & Industry

Science Museum of Minnesota

Sciencenter

The Franklin Institute

Tulsa Children's Museum

University of California Berkeley – Lawrence Hall of Science

Advisors

Association of Children's Museums

Center for the Advancement of Informal STEM Learning, Association
of Science-Technology Centers

National Girls Collaborative Project

Acknowledgements

The **Nanoscale Informal Science Education Network** was supported by the National Science Foundation under award numbers 0532536 and 0940143. **Multi-Site Public Engagement in Science** is supported by the National Science Foundation under award number 1421179. **Increasing Learning and Efficacy** is supported by the National Science Foundation under award number 1516684. **ChemAttitudes** is supported by the National Science Foundation under award number 1612482. Any opinions, findings, and conclusions or recommendations expressed in this presentation are those of the authors and do not necessarily reflect the views of the Foundation.



Space and Earth Informal STEM Education is supported by NASA under cooperative agreement number NNX16AC67A and 80NSSC18M0061. **Moon and Beyond** is supported by NASA under grant number 80NSSC18K1219. Any opinions, findings, and conclusions or recommendations expressed in this material are those of the author(s) and do not necessarily reflect the view of the National Aeronautics and Space Administration (NASA).



Sustainability in Science & Technology Museums is supported by the Rob and Melani Walton Foundation.



Public Engagement with Neuroscience and Society conference and landscape study is funded by The Kavli Foundation.

