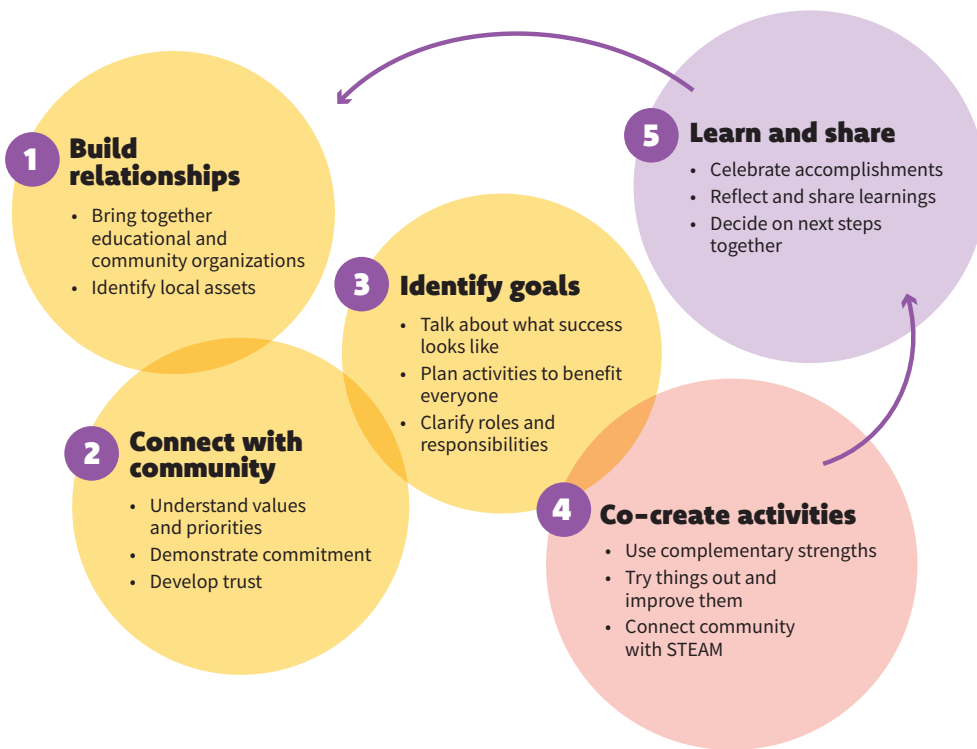




CO-CREATING WITH COMMUNITIES

This project brings together educators, community members, and subject matter experts to connect STEAM (science, technology, engineering, arts, and math) with local places and community assets. Collaborators at six locations co-create unique learning experiences that explore NASA Earth and space science and reflect family and community values and priorities.



Community of Practice

Professionals from six sites in the southwest US are working together to share and learn approaches for building lasting partnerships and co-creating meaningful opportunities to engage in Earth and space science. Insights and results are disseminated to the national STEM (science, technology, engineering, and math) engagement and education community through professional development activities and a collection of online resources.

Partner sites

- San Francisco Bay Area, California**
- San Diego, California**
- Mesa, Arizona**
- Albuquerque, New Mexico**
- Brownsville, Texas**
- Houston, Texas**

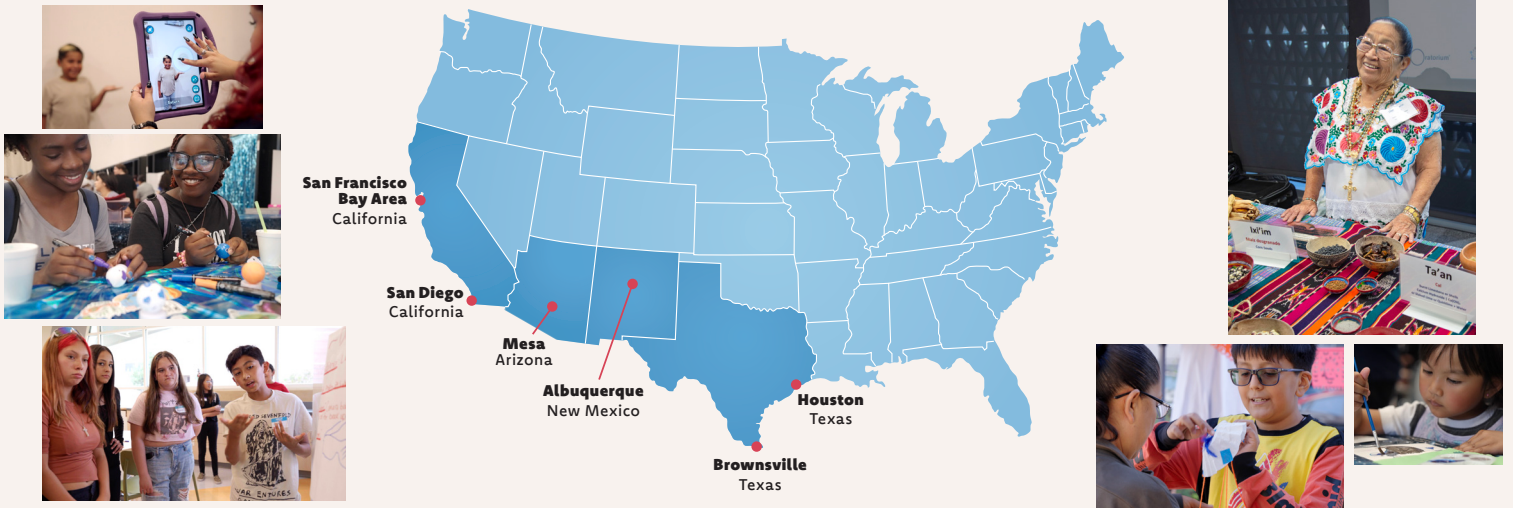


Resources

nisenet.org/cocreatingcommunities

Educational and community organizations

collaborate in six locations in California, Arizona, New Mexico, and Texas.



San Francisco Bay Area, California

Activities: Supporting young program staff to develop and deliver hands-on Earth and space activities at afterschool programs in the East Bay

Partners:

Lawrence Hall of Science and Bay Area Community Resources

Mesa, Arizona

Activities: Identifying the rich STEAM knowledge that exists in the community and creating new opportunities for young people and families to explore Earth and space science at neighborhood events, out-of-school programs, city festivals, and parks

Partners:

Arizona State University's Center for Innovation in Informal STEM Learning, Creative Community, Mesa Arts Center, Patchwork Community Inclusion, RAIL CDC, and a dedicated community co-creation group

Brownsville, Texas

Activities: Offering hands-on and digital learning experiences about space science and exploration at the children's museum, in local flea markets, and at community events such as the citywide Space Fests

Partners:

Children's Museum of Brownsville, 9th Street Company, and Reybotics

San Diego, California

Activities: Featuring Earth and space science at the annual San Ysidro STEM Fair, providing hands-on activities in afterschool programs, and hosting family STEM nights at public libraries

Partners:

Fleet Science Center, San Ysidro STEM Committee, and San Ysidro Education Collaborative

Albuquerque, New Mexico

Activities: Empowering young people to design and host a Youth Summit on the Future to shape ongoing programming and outreach activities related to Earth and space science

Partners:

Explora Science Center and Children's Museum and Horizons Albuquerque

Houston, Texas

Activities: Co-creating a series of flexible activities and learning modules about Earth and environmental science to implement in summer camps, afterschool programs, and community events

Partners:

Children's Museum of Houston and Community Family Centers

Image sources: Futuremundo and Swift Creek Media. Published under a Creative Commons Attribution-NonCommercial-ShareAlike license. Copyright Arizona State University, November 2025.