

Using ESRI Storymap: <https://www.youtube.com/watch?v=55e2tiLpvc&feature=youtu.be>

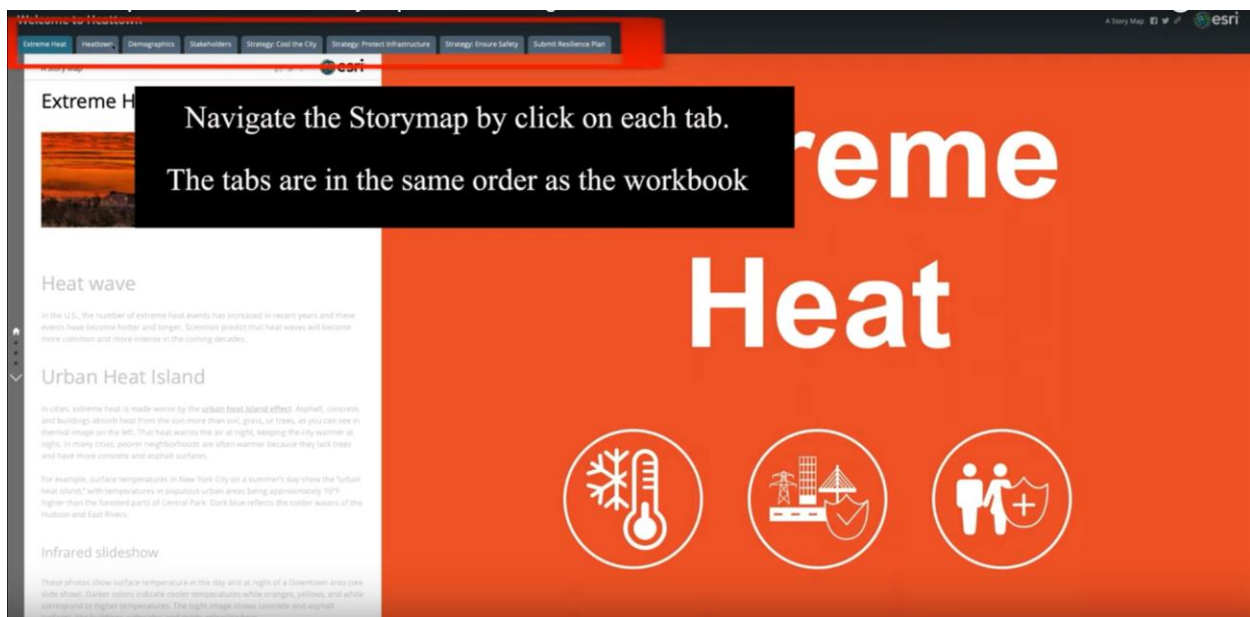
Storymap is an online presentation tool that incorporates the capability to visualize spatial data. In addition, the maps in Storymap are interactive to provide the audience with an increase “sense of place”, as the audience can explore the maps by zooming and with pop-up windows to see more descriptions of an area of interest.

Here, we are highlighting several Storymap features that can help with facilitating the forum.

Storymap follows the progression of the Workbook

The Extreme heat Storymap follows the progression of the workbook. Remember, **it doesn't replace the workbook**, instead it enhances the information inside the workbook. Participants should still use the workbook and the physical forum materials to interact with each other. The Storymap is a good tool to give a spatial information about the 1) stakeholders, 2) the climate impacts, 3) the solutions.

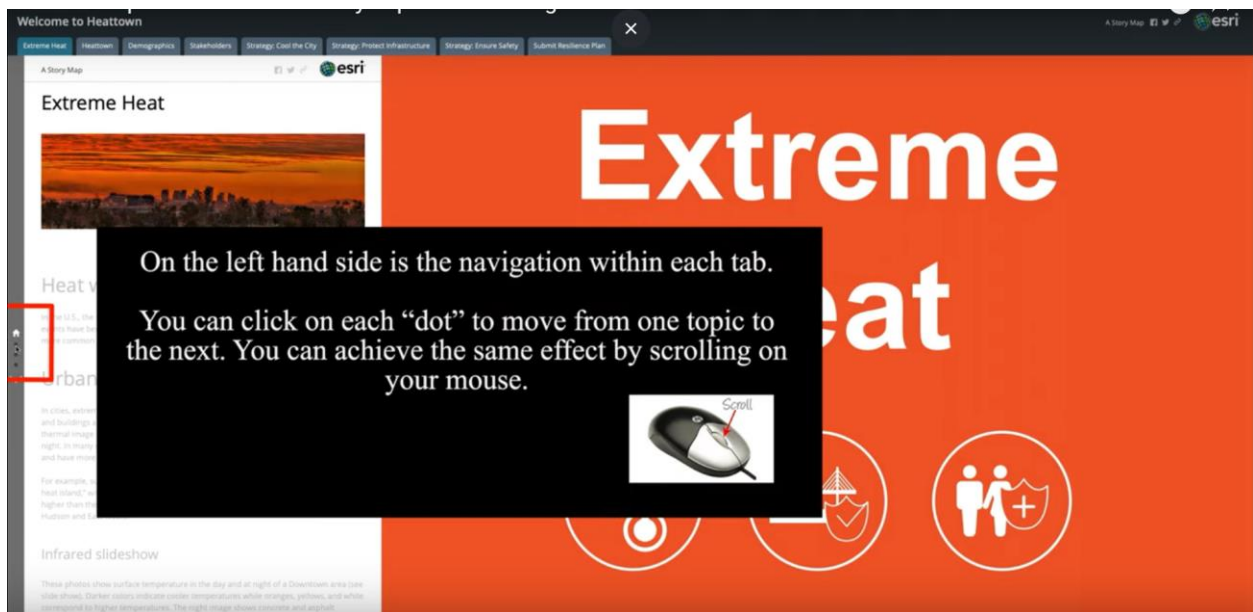
To follow the progressions of the workbook, navigate the Storymap by clicking on each of the tabs above and going through the narratives inside each tab.



Exploring the topics within each tab

Navigation

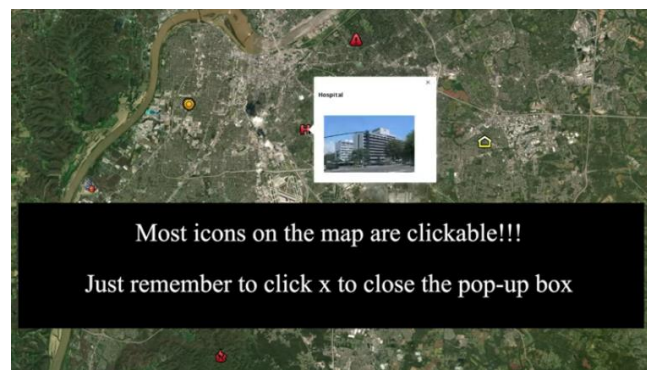
On the left side bar, the house and dots are used to navigate throughout each tab. This can be done by clicking on each dot to see the topics within the tab. You can achieve the same effect by scrolling on the mouse.

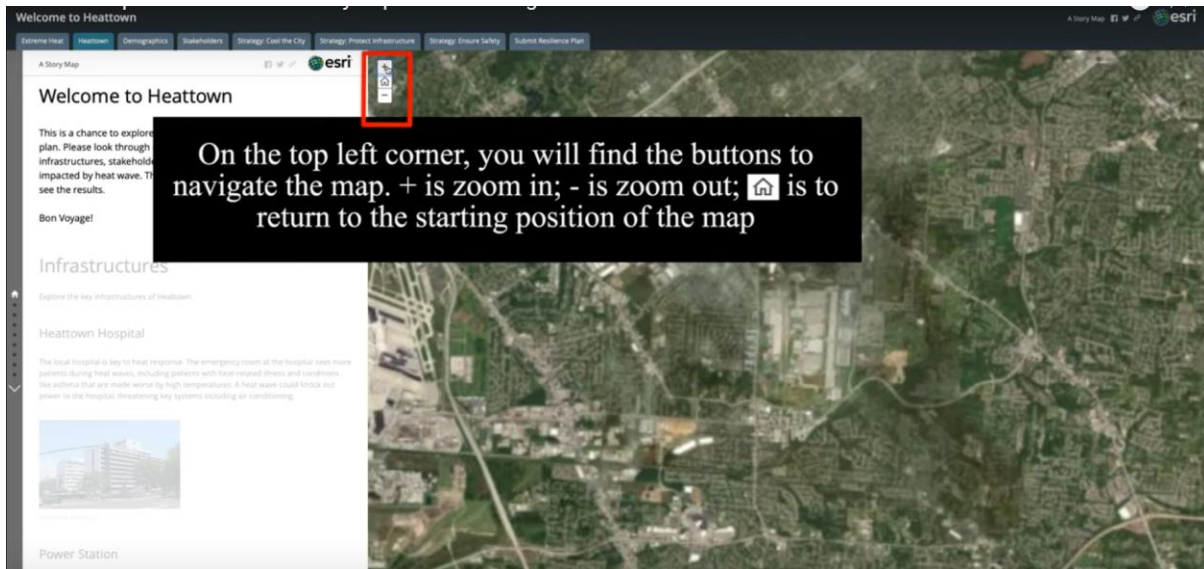


Exploring the maps

Some topics will have a map on the right side. These maps are built like most online maps (Google maps, Bing maps, etc.). These maps can be interacted with by click on the “+” or “-” to zoom in and out.

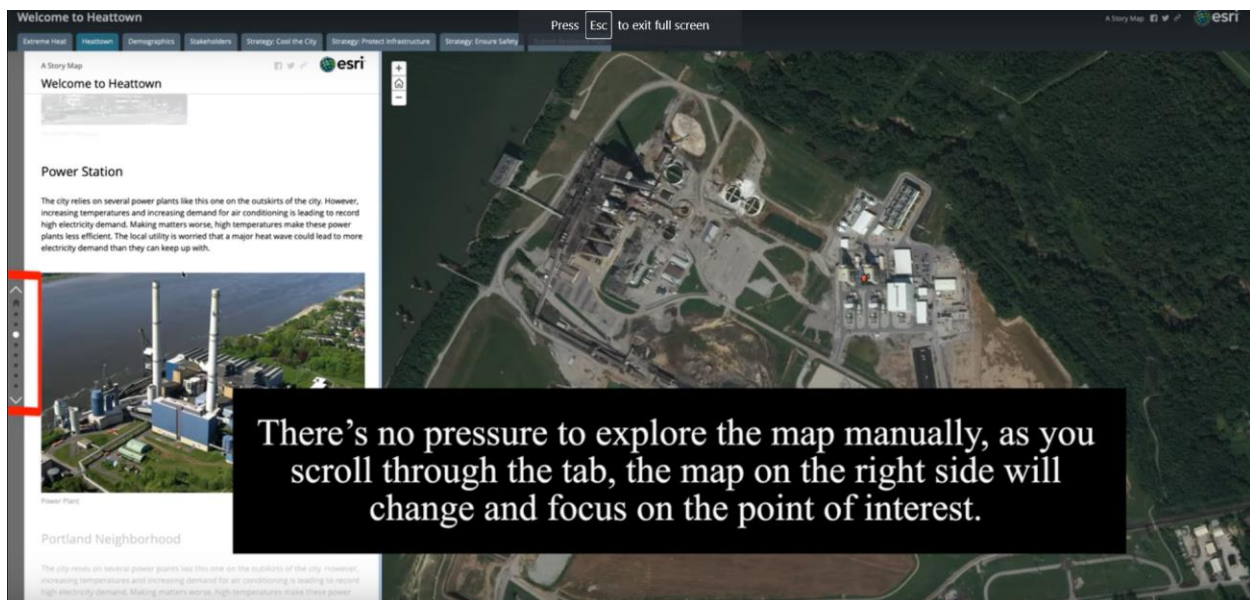
The icons on the maps can be clicked to see “pop-up” bubbles for more information.





***If the map becomes disoriented, clicking the “house” button on the map can reset the default location on the map. “+”, “-”, and “house” button can be found on the top left corner of the map.

Exploring the maps manually (as described above) is optional. When scrolling through the text (on the left side) within each tab, the map should automatically navigate to highlight or zoom-in to the area of interest.



Interactive Text

There are certain situations where there are interactive texts on the left side. Interactive texts are usually bolded and underlined.

Submit Resilience Plan

1. Submit your resilience plan to us by clicking here.
2. Visualize your resilience plan by selecting the options below.

Interactive text

Clicking on the interactive text will change the visuals on the right side. Either it will active a Google form to submit results or the map will navigate to an area of interest. Make sure to click back ("BACK" button found on the top of the right side) to navigate back to the default.

Welcome to Heattown

Extreme Heat | Heatmap | Demographics | Stakeholders | Strategy: Cool the City | Strategy: Protect Infrastructure | Strategy: Ensure Safety | **Submit Resilience Plan**

A Story Map

Submit Resilience Plan

1. Submit your resilience plan to us by clicking here.

2. Visualize your resilience plan by selecting the options below.

COOL THE CITY

Plan A

Plan B

PROTECT INFRASTRUCTURE

Plan A

Plan B

ENSURE SAFETY

Plan A

Plan B

EH_001

COOL THE CITY

Plan A

Plan B

PROTECT INFRASTRUCTURE

Plan A

Plan B

ENSURE SAFETY

Plan A

Plan B

BACK

EH011

EH012

EH_015

EH_016

EH_017

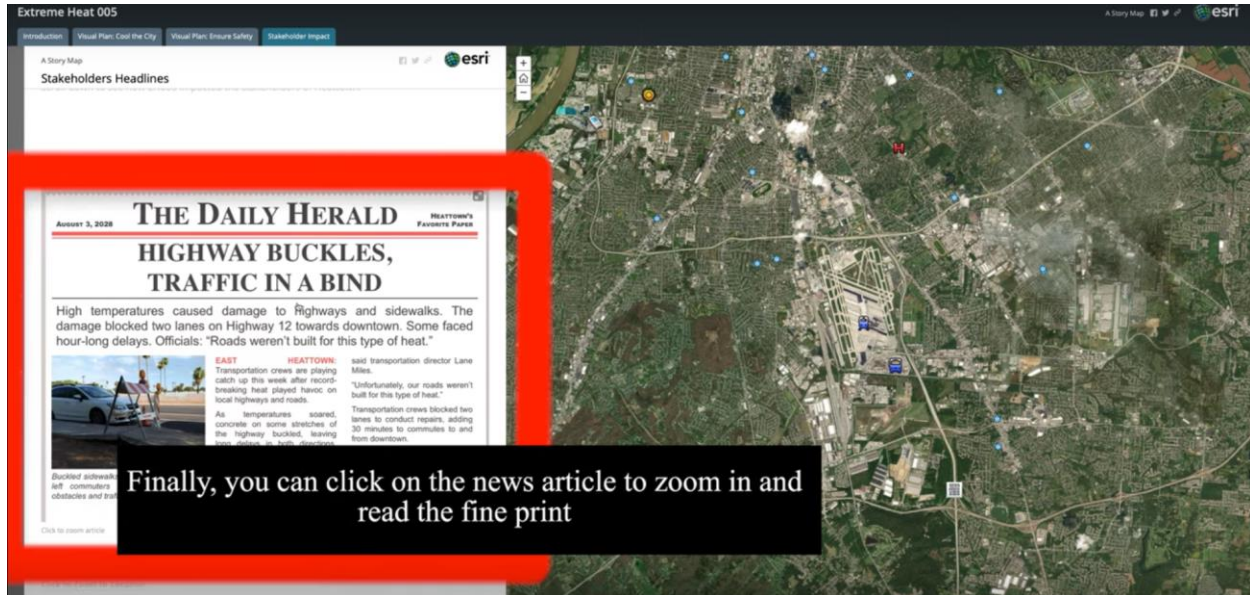
EH017

SUBMIT

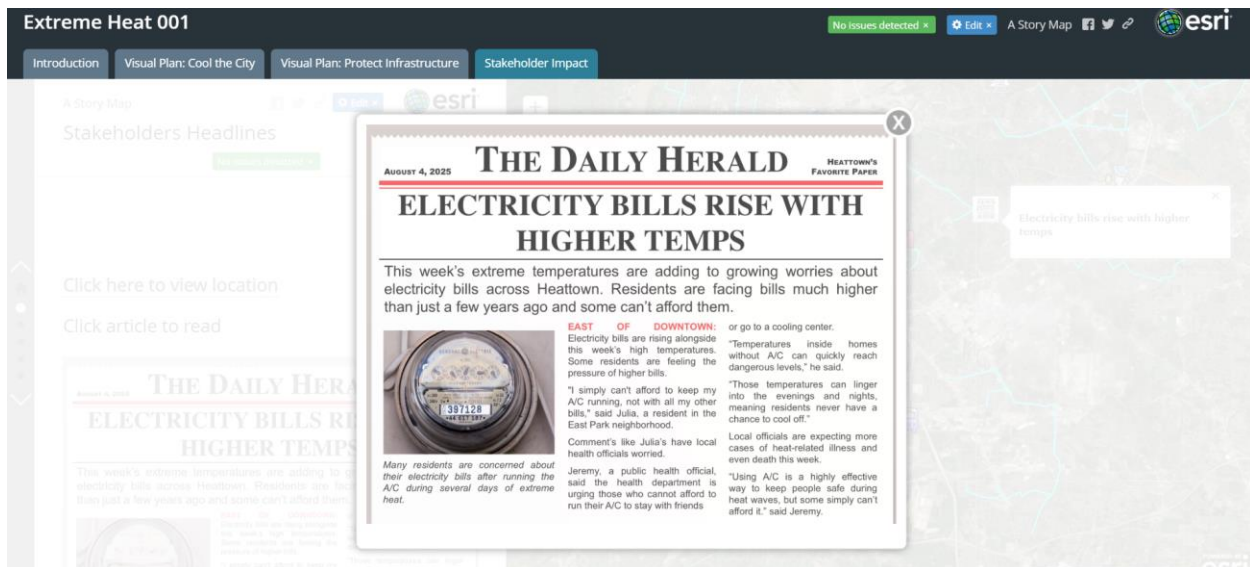
You can always toggle back to the map by clicking "Back" on the top of the right side

Reading News headlines

Under each “Stakeholder Impact” tab, there are a series of news headlines describing the aftermath of the resilience plan. Depending on the computer, sometimes these news articles become difficult to read. By clicking on the article, a pop-up window will zoom the article for easier reading.



To close the pop-up click on the “X” found on the top right corner of the news article



TRAINING VIDEO: <https://www.youtube.com/watch?v=55e2tlpvcs&feature=youtu.be>

ESRI Story Map Links

EXTREME HEAT

<https://nu.maps.arcgis.com/apps/MapSeries/index.html?appid=2ebc34df58de4fbda673af295df391df>

SEA LEVEL RISE

<https://nu.maps.arcgis.com/apps/MapSeries/index.html?appid=8de74983b341405eaf2692dbde81c9bf>

DROUGHT

<https://nu.maps.arcgis.com/apps/MapSeries/index.html?appid=64c264c15299442985b058643228c46d>

EXTREME PRECIPITATION

<https://nu.maps.arcgis.com/apps/MapSeries/index.html?appid=2ca892d3d51e40ad82cd967c35ea839f>

ALL LINKS ONLINE:

<http://www.northeastern.edu/helmuthlab/Research/mos.html>