

NISE Net Online Workshop

Online Workshop: Engaging Hispanic/Latinx Communities - Forming Community Partnerships & the Co-creation Process (Part 1)

September 10, 2024



Today's Presenters:

Paul Martin, Arizona State University, Tempe, AZ

Ethan Kruszka, Futuremundo, Saint Paul, MN

Julia Monge, Explora, Albuquerque, NM

Tracy Herrera, Horizons Albuquerque, Albuquerque, NM

Denise Rael-Comstock, Horizons Albuquerque, Albuquerque, NM

John Bartlett, Children's Museum of Houston, Houston, TX

Paul Landa, Community Family Centers, Houston, TX



Welcome! As we wait to get started with today's discussion, please:

Introduce yourself! Type your name, institution, and location into the [Chat Box](#)

Questions? Feel free to type your questions into the [Chat Box](#) at any time throughout the webinar or use the raise your hand function in the participants list and we'll unmute your microphone.

Today's discussion will be recorded and shared on nisenet.org at: nisenet.org/events/online-workshop

How to turn on Live Closed Captions

Once the host enables captions, participants will need to turn them on:

1. In the meeting **toolbar**, select **Show Captions**
(if you don't see this option on your toolbar, select **More...** and then **Captions**)
 2. Confirm or choose the language in which the captions will appear and select **Save**
 3. The subtitles will appear at the bottom of the Zoom window and can also be dragged to other parts of the window
 4. Participants can **Hide Captions** to turn off the closed captions
-

NISE Net Online Workshop

Online Workshop: Engaging Hispanic/Latinx Communities - Forming Community Partnerships & the Co-creation Process (Part 1)

September 10, 2024



Today's Presenters:

Paul Martin, Arizona State University, Tempe, AZ

Ethan Kruszka, Futuremundo, Saint Paul, MN

Julia Monge, Explora, Albuquerque, NM

Tracy Herrera, Horizons Albuquerque, Albuquerque, NM

Denise Rael-Comstock, Horizons Albuquerque, Albuquerque, NM

John Bartlett, Children's Museum of Houston, Houston, TX

Paul Landa, Community Family Centers, Houston, TX



Welcome! As we wait to get started with today's discussion, please:

Introduce yourself! Type your name, institution, and location into the [Chat Box](#)

Questions? Feel free to type your questions into the [Chat Box](#) at any time throughout the webinar or use the raise your hand function in the participants list and we'll unmute your microphone.

Today's discussion will be recorded and shared on nisenet.org at: nisenet.org/events/online-workshop

Spanish Language Translations and Bilingual Resources

Many NISE Network educational products are available in Spanish! ¡Español!

nisenet.org/spanish



Hands-on activities, interactive apps, guides & more for engaging Hispanic communities



Don't forget: National Hispanic Heritage Month is September 15 - October 15



Adelante, STEAM! Project Sites

Berkeley/Bay Area, CA

The Lawrence Hall of Science
Bay Area Community Resources

San Diego/San Ysidro, CA

The Fleet Science Center
SY STEM Committee
San Ysidro Library

Mesa, AZ

ASU CIISL
Rail CDC | Mesa Arts Center
Mesa Community

Albuquerque, NM

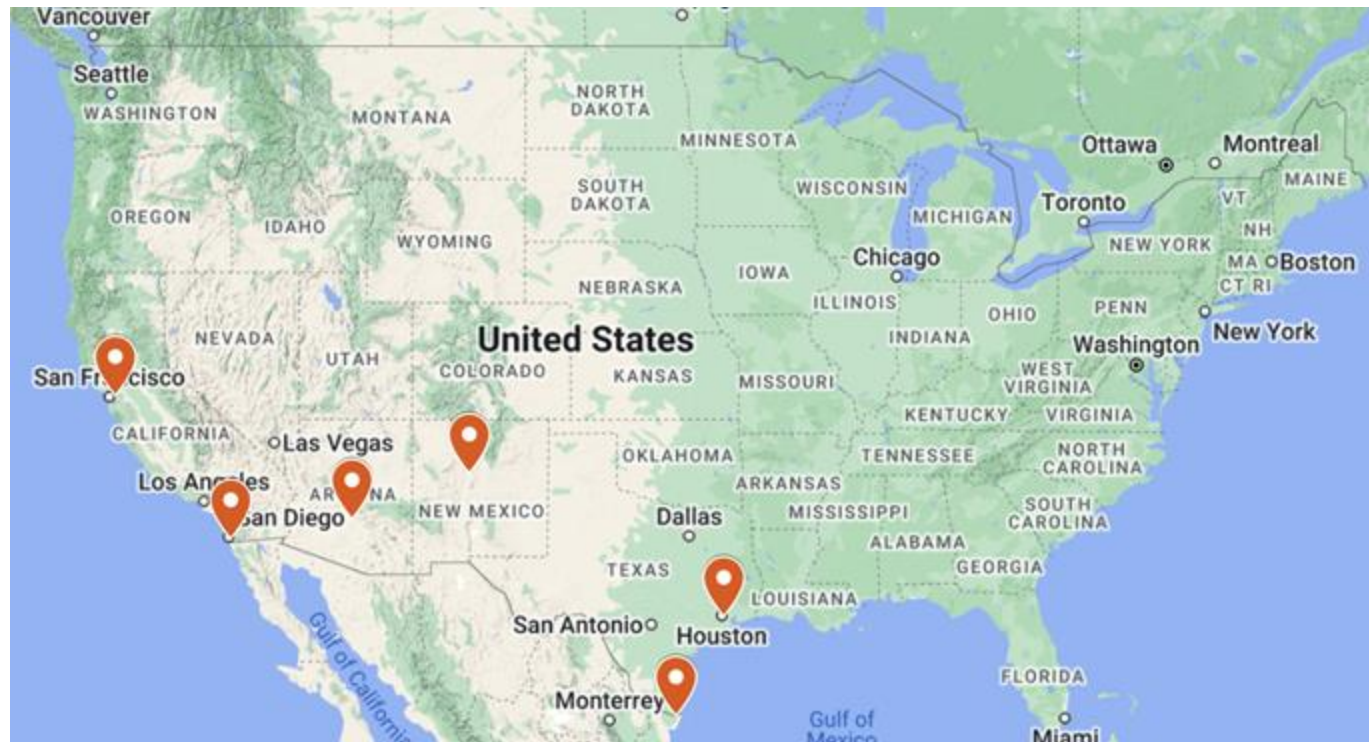
Explora Science Center
Horizons Albuquerque

Houston, TX

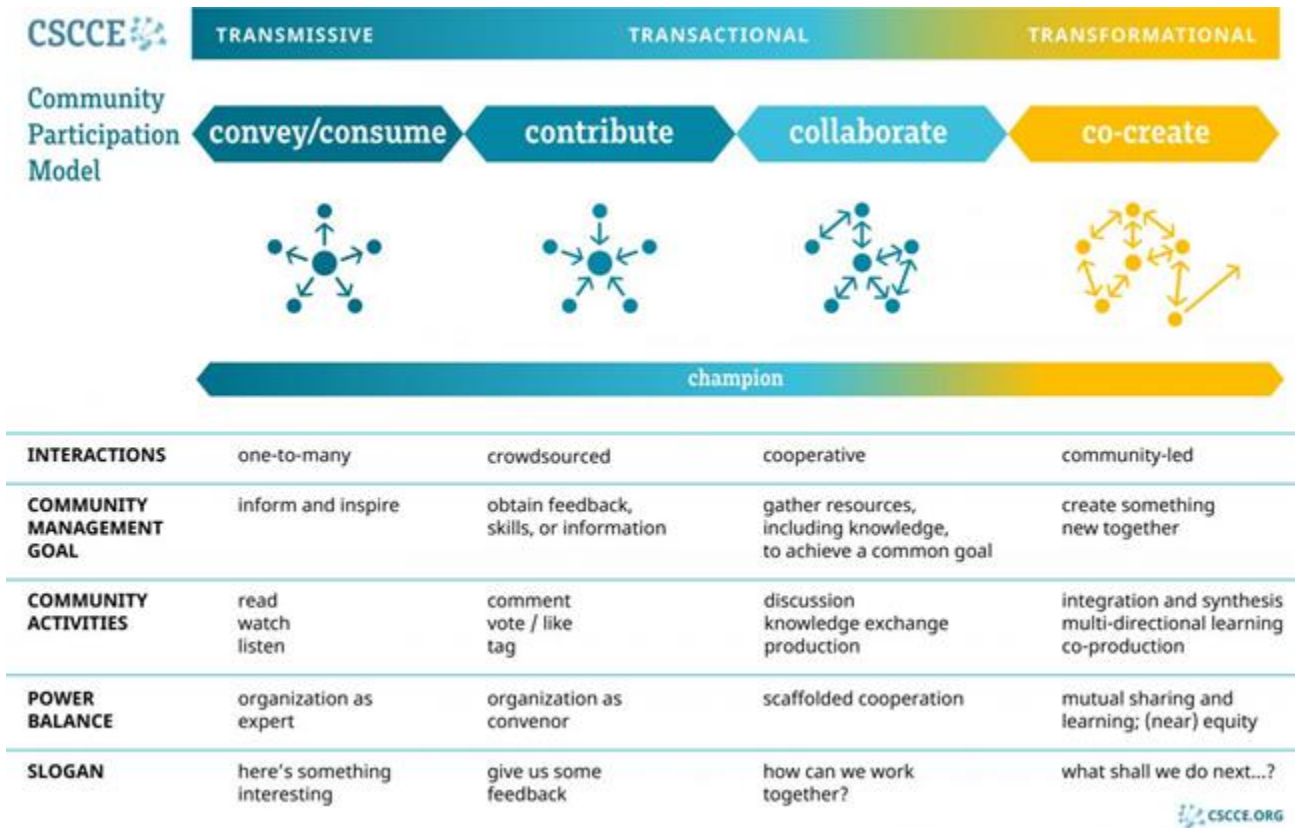
Children's Museum of Houston
Community Family Centers

Brownsville, TX

Children's Museum of Brownsville
Reybotics



Characteristics of co-creation



Co-creation roadmap



How to take a backseat (even when you really want to lead) in the co-creation process:

DON'T START WITH THE END IN
MIND.

(You build that together)

THE COMMUNITY IS THE EXPERT.

(Flip the script, be the support)

BE FLEXIBLE AND RESPONSIVE TO
NEEDS

(listen and pay attention)

BUILDING TRUST IS NON-

NEGOTIABLE.

(It's literally the most important)

GETTING YOUR HANDS DIRTY IS
EVERYONE'S JOB.

(It's also kind of fun)

Explora & Horizons Albuquerque



Scope of Work

Where we started:

- Partnership with Horizons Albuquerque & Future Focused Education
- Youth Summit on the Future
- Exhibition on the Summit



Where we are now:

- Partnership with Horizons Albuquerque
- Intern from Future Focused Education
- Listening sessions
- Multiple external partners
- New hands on activity
- Summer camps for teens
- Youth Summit on the Future
- Youth leadership council
- Exhibition on the Summit

Listening Sessions

Based on the Harwood Approach, we set out to have a series of listening sessions before moving forward with the planning of the Youth Summit.

Super Saturday

First series of listening sessions with Horizons Albuquerque. We had groups for every age group.



Youth Summit on the Future

- Topics and sessions based on the themes we observed from the listening sessions.
- Youth Ambassadors of the Future
- Facilitated Conversations, Speakers, and Panel
- Youth Summit on the Future: The Exhibition



Co-Creation & Lessons Learned

Co-Creation Process

- Growing relationship between Explora & Horizons Albuquerque
- Furthering developing relationships between teens involved and organizations
 - Involving teens in the co-creation process
 - Challenges that come with involving teens in the process

Lessons Learned

- Evolving and adapting
- Building trust with partners





John Bartlett, M.S.
Director of Exhibit Engagement



Paul Landa
Adult Education Director

Children's Museum Houston



Location: Houston, TX

Onsite Attendance: +650,000

Outreach: +185,000

Target Audience: Ages 0-12



Community Outreach



- **Open Doors Program** – Free museum access partnerships with community-based organizations
- **Parent Stars** – Parent engagement events at Title I schools
- **Para los Ninos** – Engagement workshops at libraries & community centers

Science Workshop

Afterschool science lab, woodshop, maker space, art studio at Edison Middle School



A'STEAM

Afterschool-Science, Technology, Engineering, Art/Design, Mathematics in school-based YMCA, Boys & Girls Club and other afterschool partner sites



Camp Adventure

Free literacy-focused Summer Camp for K-5th kids attending Summer School at Title I campuses



Community Family Centers aka Chicano Family Centers



Adult Education

- ESL Classes
- GED Classes
- Digital Literacy



Toddler, Infant, and Parent Services

Support Service for Parents of toddlers and younger



Family Support Services

- Intake, information, and referrals
- Food Pantry
- Translation and assistance with forms



Youth Services

- School-based Prevention Education and Intervention components
- After School/Out of School Time Program
- Summer Camp/Countdown to College



- 52 years of serving Houston's East End
- 24,000 clients served annually
- Client age range 0-90 yrs of age
- 85% of clients are Latinx

Community Family Centers partners with CMH



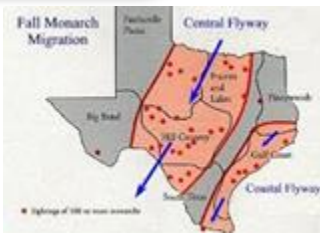
- CMH and CFC have had a history of collaboration
- CFC AE Director invited to Engaging Hispanic Communities Southwestern Partner May 2023 Meeting
- CMH Team and CFC Team have planning meetings to implement focus groups
- Project invites Adult Education Learners to participate in focus groups



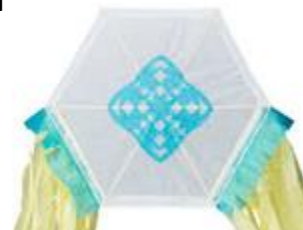
Discovery Squad Youth Volunteers @ Magnolia Park DDLM Festival



- Three teenage children of CFC's AE staff become members of Discovery Squad
- Discovery Squad members share experience with others
- CMH staff and Discovery Squad Members support DDLM activities at Magnolia Park DDLM Festival



- Pollinator seed pods
- Kite kits(Barrilete kits)
- Monarch butterfly masks



April 2024 Solar Eclipse CMH Community Viewing Site @ CFC



- CMH includes CFC as a viewing site for Eclipse Event
- Co-branding opportunities
- Engaging other community sites
 - Neighborhood businesses
 - Panadería, Mechanic Shops, Pupusería, La Pulga
 - FQHCs
 - Childcare facilities



Camp Adventure @ CFC Summer Youth Camp



- Integrating STEM activities into CFC activities where families and/or children convene
- Building capacity by training CFC staff and volunteers to conduct CMH designed activities
- Having CMH staff that have a shared background with CFC families



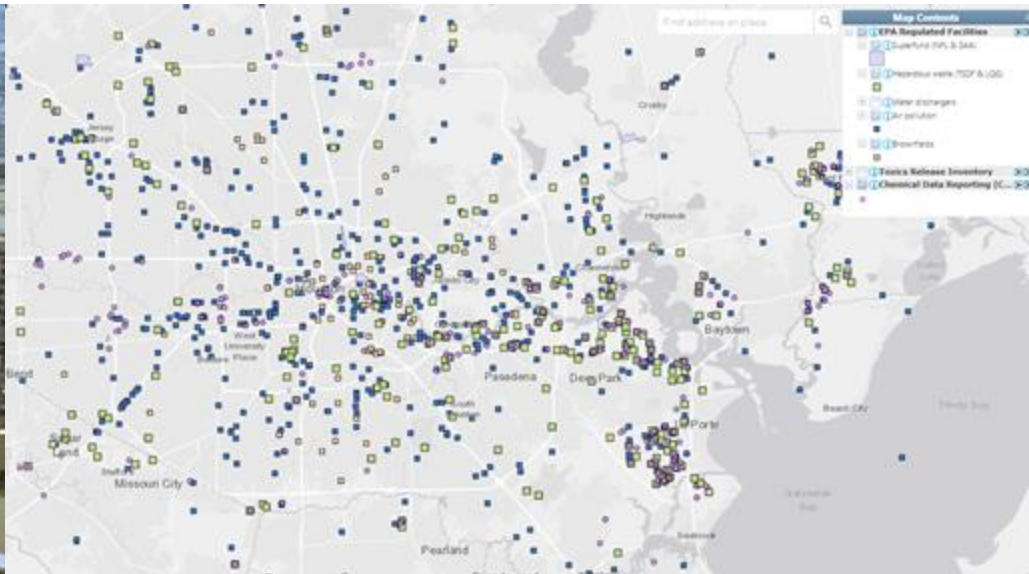


Organizing the initial focus groups

- CFC recruited families from AE Program
 - Representative sample of Latino diaspora in Houston area
- Figuring out the best number of participants
- Assessing how else can CFC staff support CMH staff with activities
- Creating meaningful engagement with CMH staff...not just another focus group study



Houston's concerns



Natural Disasters <<< Anthropogenic Pollution

Focus groups – Summer/Fall 2023



Community Family Centers



Children's Museum Houston

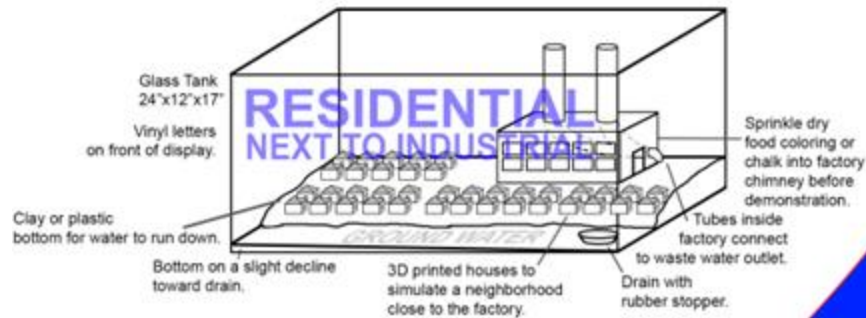


Activity Development & Prototyping



Pollution Modules:

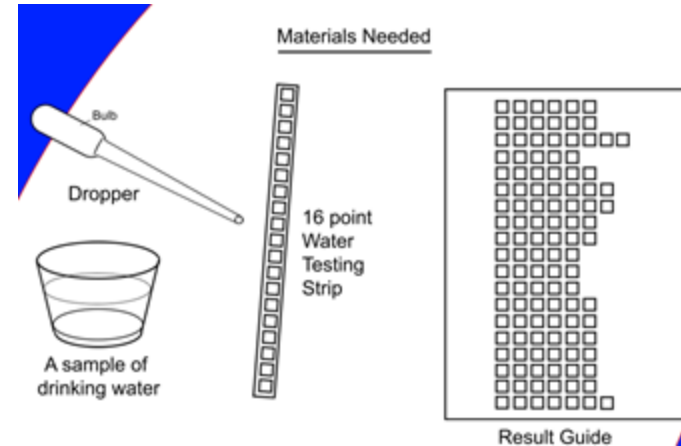
1. **Water – live testing!**
2. *Air – building!*
3. *Soil – designing!*



1.) Learn about the pollution



2.) Learn about filtration



3.) Learn about testing

Water Pollution Module Testing!



Water Pollution
Science



Water
Filtration



Water Quality
Testing



Co-creation Continues! - Fall 2024

Next steps:

- Testing at festivals and other outreach events
- Establish more partnership events with CFC, SEDES, etc.
- Developing take home resources for each module
 - i.e. children's books, extra testing strips, etc.)
- Finalize the Water Pollution Module
- Completing the Air Pollution and Soil Pollution Modules
- Training CFC Staff to facilitate these modules



Organizational Outcomes

Community Family Centers

- Integrate STEAM related activities across programs
- Increase access to STEAM activities in community informal settings
- Create greater curiosity and demonstrate community's ability to affect positive change

Children's Museum Houston

- Assess and adapt outreach strategies to increase impact and create deeper connections to the Houston communities we serve
- Develop and implement STEAM activities that are culturally relevant to our community

Thank you!



John Bartlett, M.S.

Director of Exhibit Engagement

Phone: 713-535-7232

Email: jbartlett@cmhouston.org

Website: cmhouston.org

1500 Binz, Houston, TX 77004



Paul Landa

Adult Education Director

Phone: 713.923.2316

Email: planda@communityfamilycenters.org

Website: communityfamilycenters.org

7524 Ave E, Houston, TX 77012



Spanish Language Translations and Bilingual Resources

Many NISE Network educational products are available in Spanish! ¡Español!

nisenet.org/spanish



Hands-on activities, interactive apps, guides & more for engaging Hispanic communities



Don't forget: National Hispanic Heritage Month is September 15 - October 15



Next Online Workshop...

Engaging Hispanic/Latinx Communities - Resources for Public Engagement (Part 2)

October 8, 2024

2pm-3pm Eastern / 11am-12pm Pacific



[**nisenet.org/events**](https://nisenet.org/events)



Resources & Opportunities



Learn more and access the NISE Network's online digital resources:
nisenet.org/browse-topic



Read our monthly newsletter
nisenet.org/newsletter



Past Recordings of Online Workshops
nisenet.org/online-workshop-recordings-list

Follow NISE Net on social networking
nisenet.org/social



Thank You



Q&A

**Use the raise hand
feature or type your
question into the chat**

